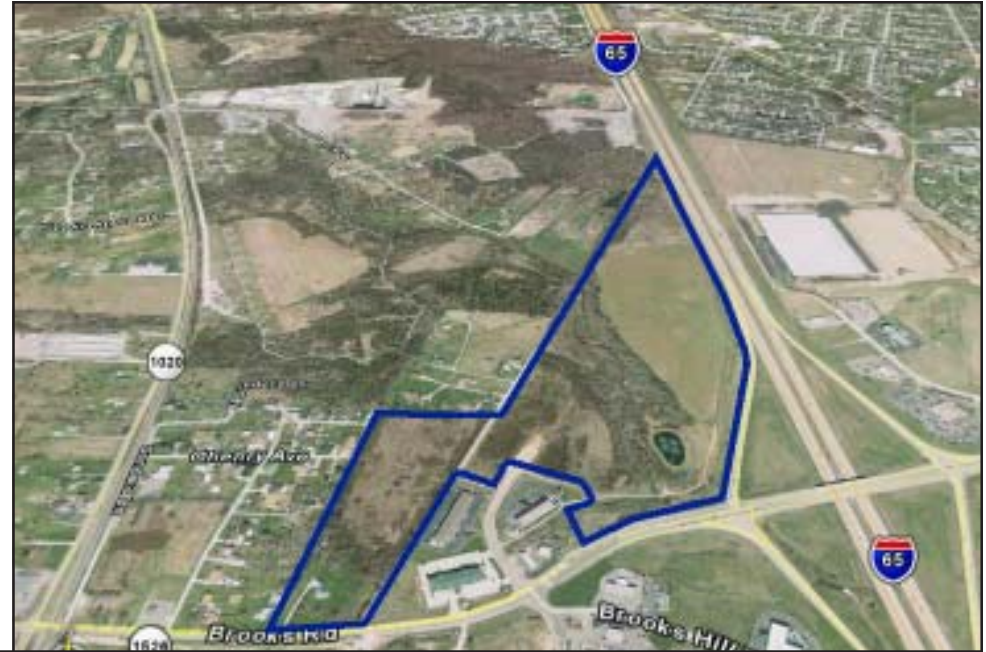
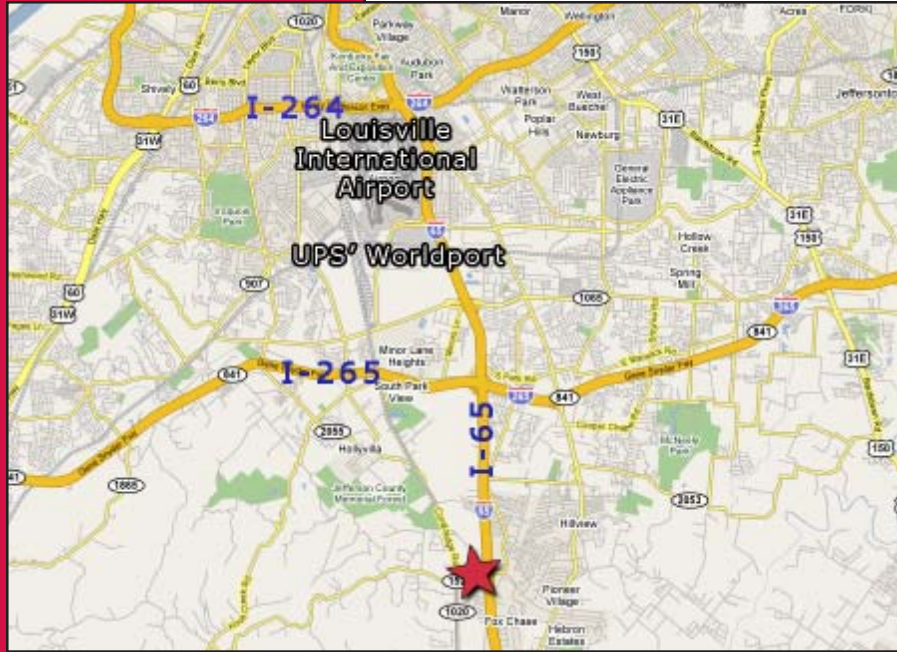


LAND AVAILABLE

METRO LOUISVILLE AREA
NW Brooks Hill Rd, Hillview, KY 40109



Property Description

- 64+/- acres
- Outstanding Interstate interchange
- Divisible: Retail lots divisible to 1 acre
- Approx. 3,500' frontage along I-65
- Utilities to site
- Excellent visibility
- B1 zoning
- Sites available for sale, lease, or build-to-suit
- Can accommodate up to a 500,000 SF building
- Approximately (7) miles from UPS' Worldport

Demographics

| | <u>5 Miles</u> | <u>7 Miles</u> | <u>10 Miles</u> |
|------------------------------|----------------|----------------|-----------------|
| Population | 72,232 | 129,356 | 299,746 |
| Average HH Income | \$53,788 | \$52,323 | \$50,619 |
| Traffic Count (I-65): | 96,400 ADT | | |

www.ccre.biz

For more information, contact:

David McCoy
 502.379.6005
 dmccoy@ccre.biz

Lee C. Wilburn, SIOR
 502.379.6006
 lwilburn@ccre.biz

4139 Cadillac Court
Suite 200
Louisville, KY 40213
Phone: 502.379.6000
Fax: 502.379.6220
www.ccre.biz

We obtained this information from sources we believe are reliable, however, we make no guarantee, warranty or representation about it. It is provided subject to the possibility of errors, omissions, change of price, rental or other conditions, prior sale, lease or financing, or withdrawal without notice. Images or plans presented are not architectural or "as built" drawings and are presented to give an approximation of space/dimensions and, therefore, no warranty or representation, express or implied, is made to their accuracy. It is your responsibility to independently verify that the property is acceptable to you and for your intended use.

