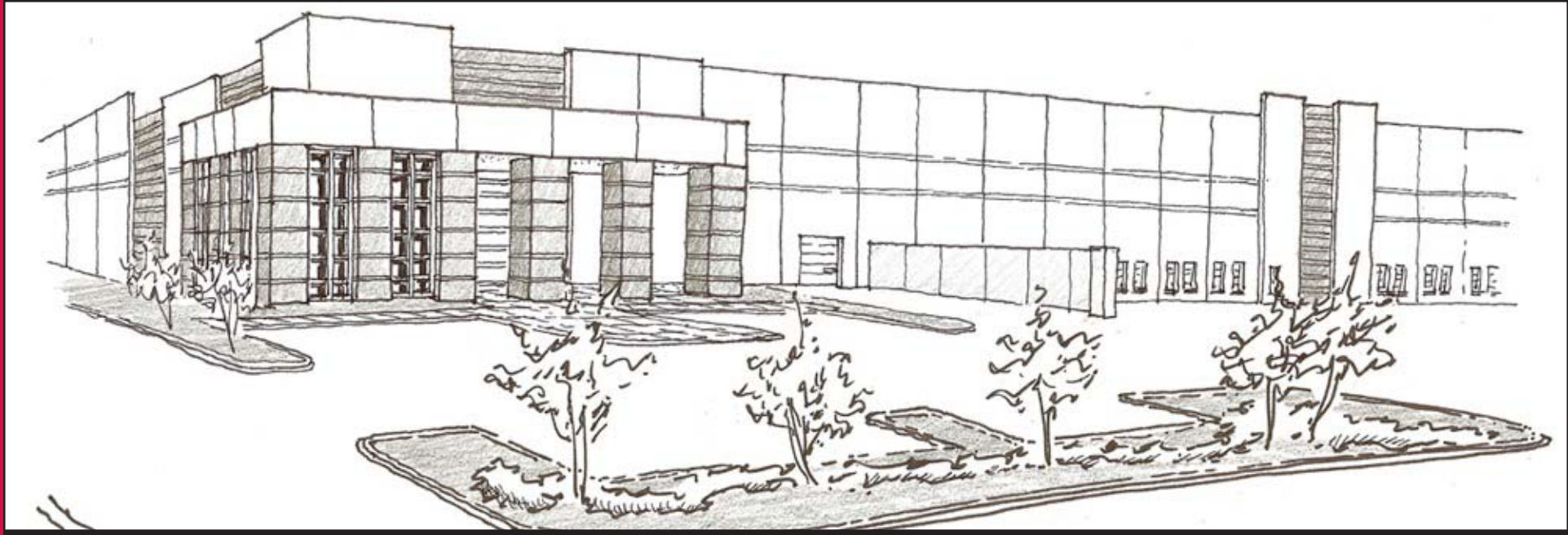


INDUSTRIAL FOR LEASE

**CEDAR GROVE BUSINESS CENTER
METRO LOUISVILLE AREA, SHEPHERDSVILLE, KY**



Property Features

- 400,000 SF expandable to 700,000 SF
- Concrete tilt-up construction
- 52 acre site
- Office built-to-suit
- 36' clear height
- ESFR sprinkler system
- Redundant (3) electric sources
- 50' x 60' loading bays
- 50' x 50' column spacing
- 175 dock doors
- 200 trailer spaces



Developed by
CROSSDOCK
DEVELOPMENT

We obtained this information from sources we believe are reliable, however, we make no guarantee, warranty or representation about it. It is provided subject to the possibility of errors, omissions, change of price, rental or other conditions, prior sale, lease or financing, or withdrawal without notice. Images or plans presented are not architectural or "as built" drawings and are presented to give an approximation of space/dimensions and, therefore, no warranty or representation, express or implied, is made to their accuracy. It is your responsibility to independently verify that the property is acceptable to you and for your intended use.

For more information, contact:

David Davis, SIOR, CCIM

Direct: 502.379.6004

Mobile: 502.876.6702

ddavis@ccre.biz

4139 Cadillac Court

Suite 200

Louisville, KY 40213

Phone: 502.379.6000

Fax: 502.379.6220

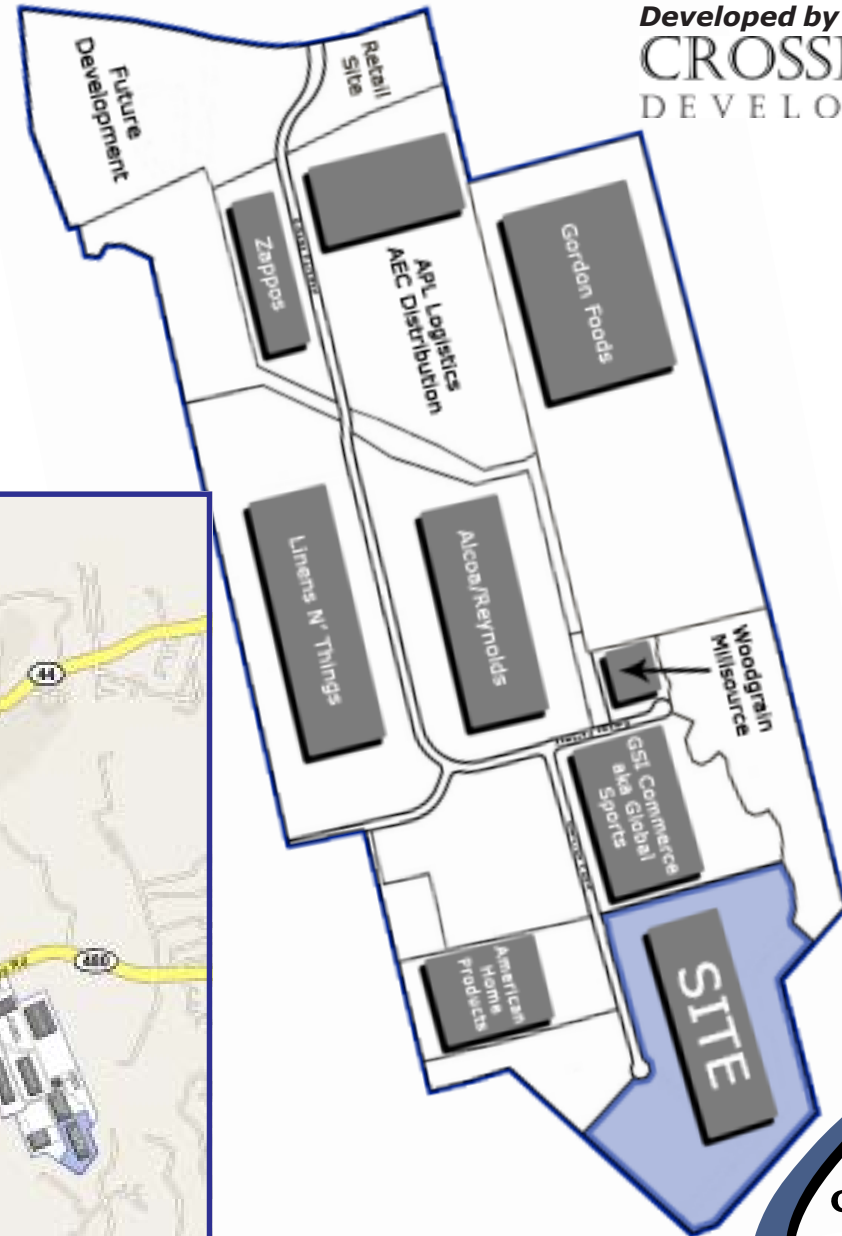
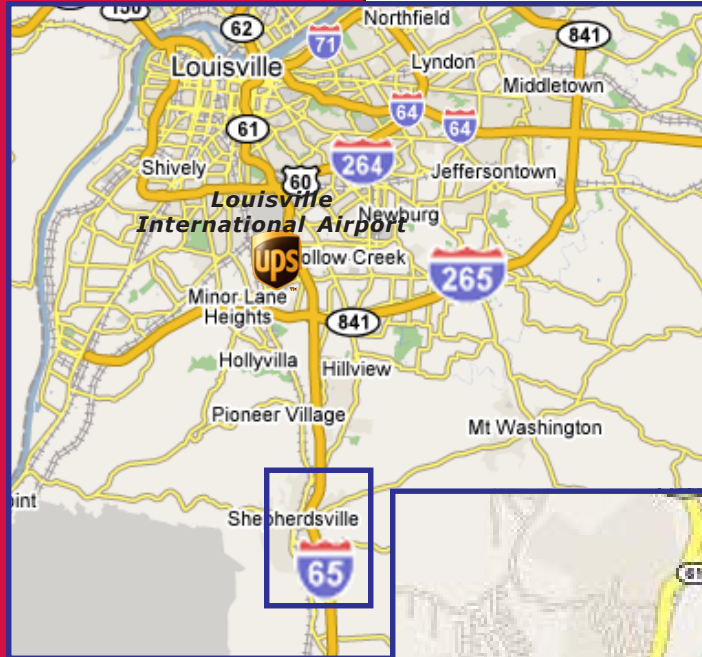
www.ccre.biz

www.ccre.biz

COMMONWEALTH
COMMERCIAL
REAL ESTATE

INDUSTRIAL FOR LEASE

CEDAR GROVE BUSINESS CENTER METRO LOUISVILLE AREA, SHEPHERDSVILLE, KY



Developed by
CROSSDOCK
DEVELOPMENT

www.ccre.biz

For more information, contact:

David Davis, SIOR, CCIM
Direct: 502.379.6004
Mobile: 502.876.6702
ddavis@ccre.biz

4139 Cadillac Court
Suite 200
Louisville, KY 40213
Phone: 502.379.6000
Fax: 502.379.6220
www.ccre.biz

We obtained this information from sources we believe are reliable, however, we make no guarantee, warranty or representation about it. It is provided subject to the possibility of errors, omissions, change of price, rental or other conditions, prior sale, lease or financing, or withdrawal without notice. Images or plans presented are not architectural or "as built" drawings and are presented to give an approximation of space/dimensions and, therefore, no warranty or representation, express or implied, is made to their accuracy. It is your responsibility to independently verify that the property is acceptable to you and for your intended use.


COMMONWEALTH
REAL ESTATE